



# Newsletter



## Happy March!

Spring has finally arrived!

To celebrate, the staff at Sooty's garden centre have been very busy restocking the centre to prepare!

With new product ranges arriving daily, and spring bulbs in stock now's the perfect time to plan, prepare, and start growing in your garden for 2023!

Don't forget to follow us on other socials too!

[www.sootysweeps.com](http://www.sootysweeps.com)



@sweepscafeatsootyplants



@sootyandsweeps



@sootyplants





# Jobs to do in the garden this month



**Plant shallots,  
onion sets and  
early potatoes**



**Prune bush and  
climbing roses**



**Plant summer-  
flowering bulbs**



**Lift and divide  
overgrown  
clumps of  
perennials**



**Mow the lawn on  
dry days (if  
needed)**



**Start feeding fish  
and using the  
pond fountain;  
remove pond  
heaters**



**Lift and divide  
overgrown  
clumps of  
perennials**



**Top dress  
containers with  
fresh compost**



# Welcoming Spring

SOOTY'S HAS NEW STOCK FOR THE YEAR ARRIVING ALREADY

## Spring Bulbs

Spring bulbs are fantastic as they provide early colour throughout your garden, at affordable prices!

We currently have a wide variety in stock.

A few variants are;

- Iris, Pixie, Joyce and Mixed
- Narcissus, Topolino and Baby Moon
- Tulip, Red Riding Hood, Shirley, Jetfire, Guiseppe Verdi
- Camellia's, Snow Drops, Rhododendrons, and more!



## OUR TOP TWO STOCK ADDITIONS

- Spring Bulbs (Wide varieties in stock)
- Climbing Roses (Wide varieties in stock)



## Climbing Roses

Another new stock we're thrilled about is our climbing roses! These plants are an excellent way of bringing height and, as David Austin Roses states, a feeling of abundance to the garden with bright pops of colour due to their large flowers. Best used on house walls, they can also be added to growing pillars, obelisks, walls, trellises, and over arches.



# *Blooming lovely flowers*

Sooty's Plants also has a diverse range of flower seeds in stock.

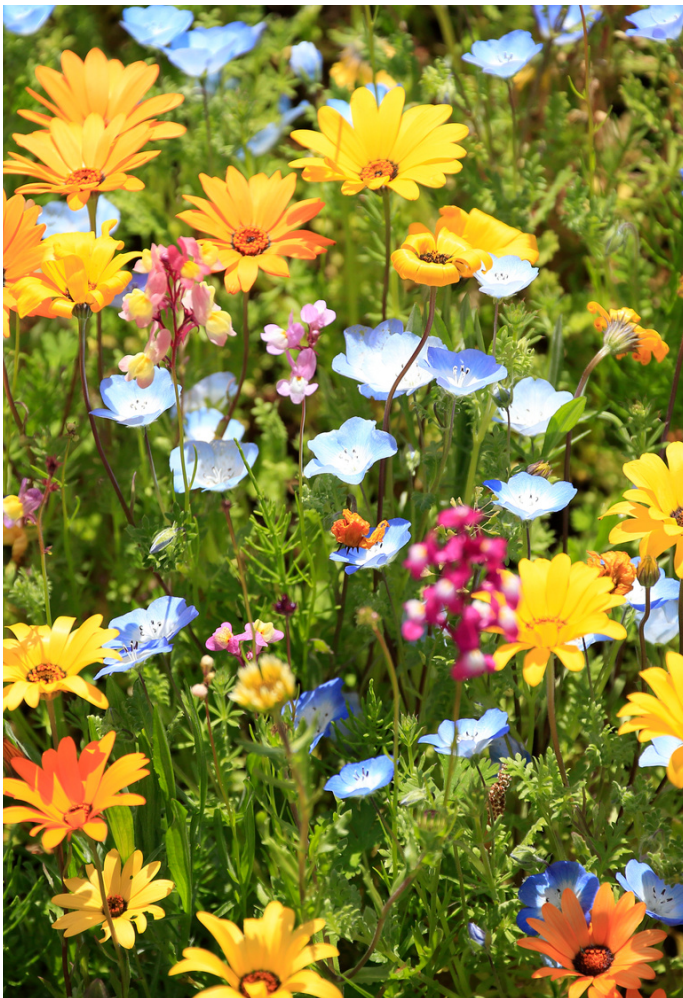
To further promote wildlife and nature in your garden, we recommend allocating a small section of our garden to grow a wide variety of flowers.

Our seeds include many annuals - which are easy to grow and provide vibrant colourful flowers throughout summer.



## Our top tips for gardening flowers in March are

- Pick off any developing seedheads on daffodils and other spring bulbs, but leave the foliage to die back naturally
- Finish pruning roses early in the month
- Cut dogwoods, willows, cotinus and paulownia right down to the base to promote vigorous new growth
- Plant faded forced bulbs out in the garden for blooms next year
- Plant lilies and other summer-flowering bulbs in pots and borders. Take a look at our complete guide to planting bulbs.
- Feed ericaceous shrubs, such as rhododendrons, azaleas, camellias and pieris, with an ericaceous fertiliser
- Mulch borders generously with garden compost
- Plant new roses and other shrubs and climbers
- Sow wildflower seeds in trays or modules, to produce plants for your own mini-meadow
- Check tender new shoots for aphids, and remove before infestations get out of hand





# Preparing for Mothers Day

SOOTY'S AND  
SWEEP'S HAVE YOU  
COVERED THIS  
MOTHER'S DAY!

Whether you're looking to treat your mother to a beautiful new plant, some new gardening tools, or a truly unique gift like a nature tea pot set, we have it all in one convenient place. Make sure to pop in and check us out!

A GIFT WON'T CUT  
IT?  
THEN TREAT HER  
TO SOMETHING  
DELICIOUS AT  
SWEEPS!



If you are unsure of which products you need, or whether a specific plant can be kept indoors, or something entirely different, please ask a member of staff, and they will happily assist you in-store.

*To book a table at Sweeps,  
please call us at 01772 812540.*

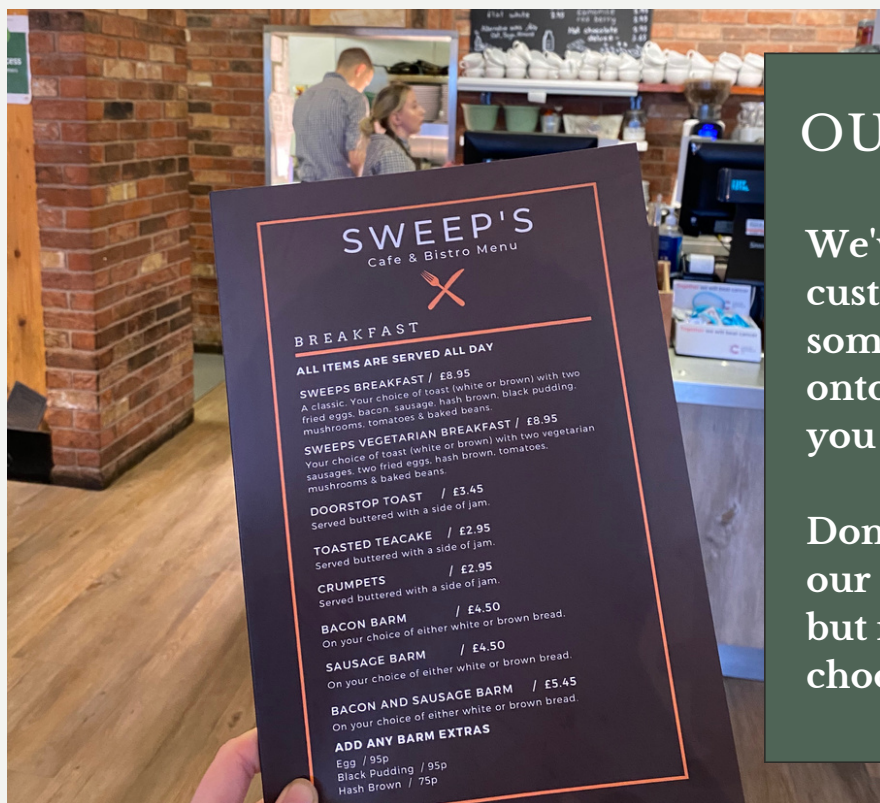


# Sweep's Cafe

## OUR NEW MENU

We've been listening to what our customers want, and have added some of our popular 'specials' onto our permanent menu for you all!

Don't worry, we still have all of our same popular core items, but now we've got even more to choose from.



## WHILE SHOPPING HERE, WHY NOT SWING INTO SWEEP'S CAFE TOO?

Where we take pride in using the freshest, local produce in all our dishes. Daily, we create delicious specials, along with home-baked cakes, and coffees made fresh to order.



TO BOOK A TABLE FOR MOTHERS DAY PLEASE CALL  
01772 812540



# March Sowing and Planting Guide

Spring is finally upon us, and usually arrives mid-March. These frequent sunny days provide a fantastic opportunity for increasing the range of gardening jobs we can achieve! So read this guide, and prepare to be busy! From prepping seed beds to cutting back winter shrubs, to sowing seeds, and more, let's get back into the garden!

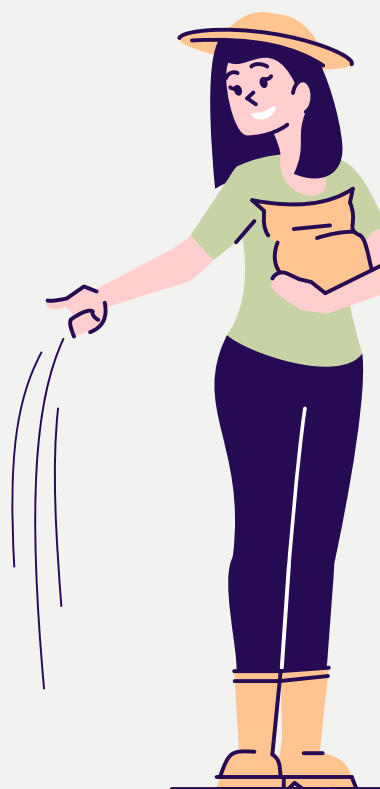
## Sowing and planting

### Fruit

- March is your last chance to plant bare-root fruit trees (ideally plant container-grown ones too).
- Plant cold-stored strawberry runners.
- Sow seeds of alpine strawberries.

### Vegetables

- Plant onions, shallots, and garlic sets.
- Plant Jerusalem artichoke tubers.
- Chit early and maincrop potatoes.
- Plant asparagus crowns.
- Indoors, sow seeds of sweet peppers, tomatoes, cucumbers, aubergines, celery, salads, and globe artichokes.
- In mild areas with light soil, sow seeds outdoors. Broad beans, carrots, parsnips, beetroot, onions, lettuce, radish, peas, spinach, summer cabbage, salad leaves, leeks, turnip, summer cauliflower, swiss chard, and kohlrabi.







# March



## Pruning/General maintenance

### Fruit

- Carry out formative pruning of newly planted fruit trees if the weather is dry.
- Prune blueberries
- Untie canes of blackberries and hybrid berries that have been bundled together for winter - train into arches.
- Never prune grape vines after late winter to avoid sap bleeding - otherwise the vines can become weakened or killed.
- Mulch raspberries, blueberries, and lingonberries with well-rotted farmyard manure.
- Increase the watering of citrus as growth resumes.
- Switch to a summer feed for all citrus trees.
- Repot or top-dress container grown fruit if needed.

### Vegetables

- Protect early outdoor sowing with fleece and polythene.
- Put supports in place for peas.
- Start preparing runner bean supports and trenches for sowing (in May) for both runner beans and celery.
- Try to avoid digging in wet weather - work from a plank of wood if your must, to avoid treading on the bed and compacting soil.

### Problems

- Place mice controls near stored vegetables and seeds.
- Protect early seed sowing from slugs.
- Protect brassicas from pigeons - and look out for grey mould/mildew.
- Get on top of weed control now, before summer.





# Flowers to pick in March



Bergenia



Camellia



Daphne



Hellebore



Narcissus



Primrose



# Quiz Time!

Good luck!

What should be the optimum pH of potting medium for the successful growing of fern

- a. 4-7
- b. 3-3.5
- c. 6.5-7



\_\_\_\_\_ containers are cheap and ideal for home garden?

- a. Plastic
- b. Earthen
- c. Concrete

What should be the optimum soil temperature of potting medium?

- a. 18 – 21C
- b. 10-20C
- c. 8-10C



In what season should you plant daffodil bulbs?

- a. Spring
- b. Summer
- c. Fall



Air layering is common in ...

- a. Cotinus
- b. Dracaena
- c. Aglaonema





*We can't wait to  
welcome you!*

