



# Newsletter



## Happy July!

July is a good month for gardeners because the longer daylight hours, warm temperatures, and abundant rainfall provide optimal conditions for plant growth and cultivation.

Let's get the most out of July together!

Don't forget to follow us on other socials too!



@sweepscafeatsootysplants



@sootysandsweeps



# Jobs to do in the garden this month



**Mow lawns weekly – but consider leaving some areas uncut for wildlife**



**Open greenhouse vents and doors on warm days**



**Deadhead bedding plants and repeat-flowering perennials**



**Water tubs and new plants if dry, roots need water and air**



**Check clematis for signs of clematis wilt**



**Order catalogues for next year's spring flowering bulbs**



**Harvest apricots, peaches, and nectarines**



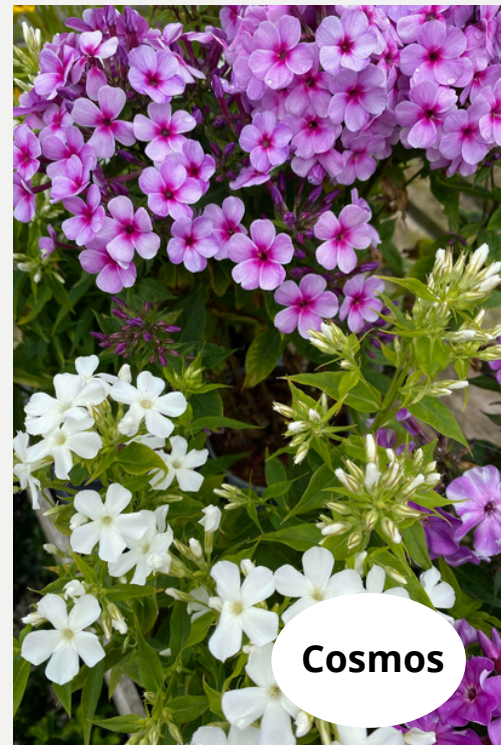
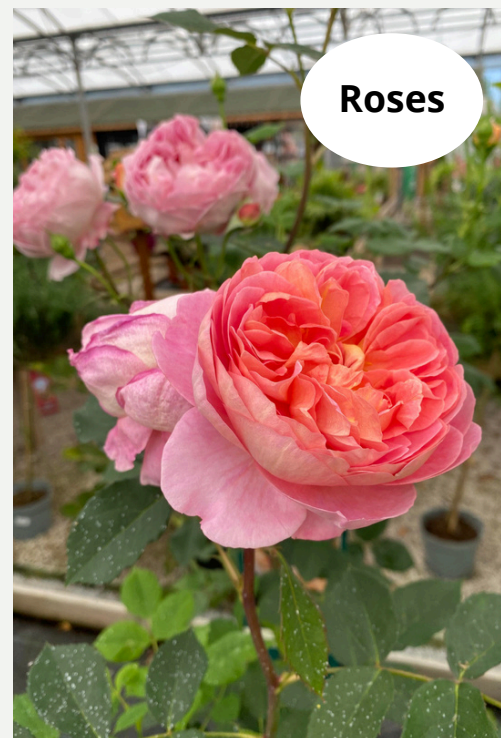
**Give your lawn a quick-acting summer feed**



# In Bloom flowers

At Sooty's garden centre, we have a vast range of plant options, all competitively priced and of the highest quality!

Our staff favourite flowers which are in bloom right now include





# BEE-ING KIND THIS SUMMER

By simply planting bee-friendly plants in your garden, you're doing your part to help save and protect the bees!

So please, bee-kind to the bees, and plant some flowers today! Some potential flowers, which we have stocked at Sooty's right now are...

Lavender



Foxglove



Delphinium



Geranium





# Deliciousness at Sweep's



## LOTS OF NEW MENU ITEMS!

We've been listening to what our customers want, and have added some of our popular 'specials' onto our permanent menu for you all!

As well as our new Slimmers' Way menu - which has been a huge success! Come in today and try something different!

## OUR NEW BAKING WINDOW!

Have you ever wondered how our in house bakers make their delicious treats?

Visit us today, and watch for yourself inside our Chalet!



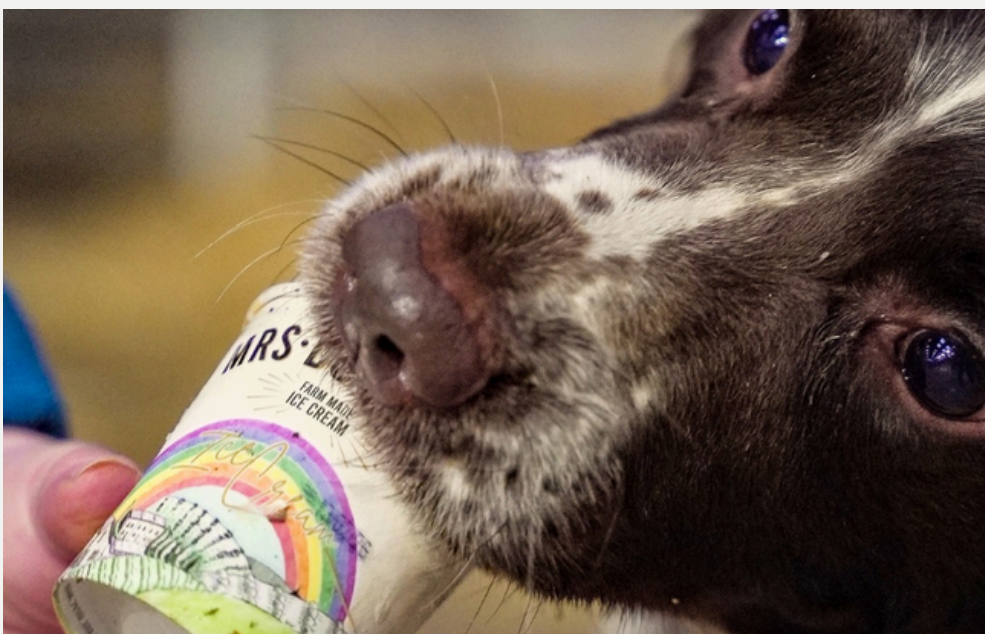
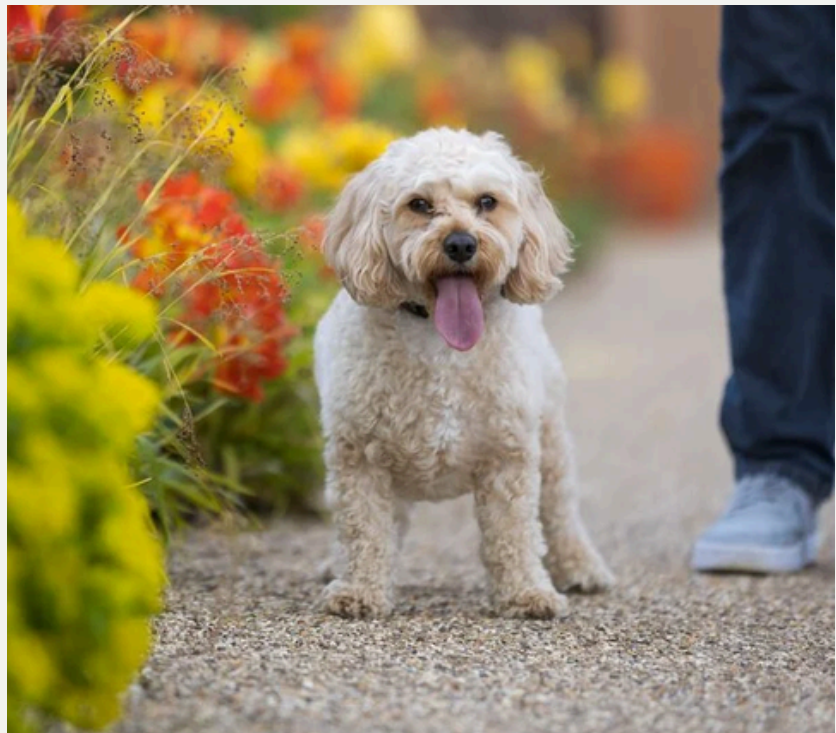
TO BOOK A TABLE PLEASE CALL  
01772 812540



# We're Dog Friendly!

## *DID YOU KNOW*

Both Sooty's and Sweeps are dog friendly! Not only can your four legged friends walk around the garden centre, we have special allocated seats within our cafe which are dog friendly! Just was a member of staff and we will help you!



*We also sell  
Mrs  
Dowson's  
Doggie  
Ice-cream,  
for only £3!*



# Beautiful arrangements made by our staff!

**WE STRIVE TO SELL ONLY THE  
BEST, TOP-QUALITY, BEAUTIFUL,  
HEALTHY PLANTS AVAILABLE**

**WE ALSO USE THESE TO MAKE OUR  
BEAUTIFUL ARRANGEMENTS!**



From our flower hanging baskets to pots, we only use the best quality plants to offer you the best price for money! Such as these flower pots to the left, only £22.99!

Let us get our hands messy, while your garden looks stunning this summer!



# July Planting/Harvest Guide

July is an incredible month in terms of harvest. This month - if you already have crops growing - the fruit and veg usually ready to harvest in July are:

## Outdoor sow

- Kale
- Chard
- Mustard Greens
- Brussels sprouts
- Cabbages
- Cauliflowers
- Leeks
- Broccoli
- French beans
- Lettuce
- Beetroot
- Carrots (late varieties)
- Turnips (late varieties)

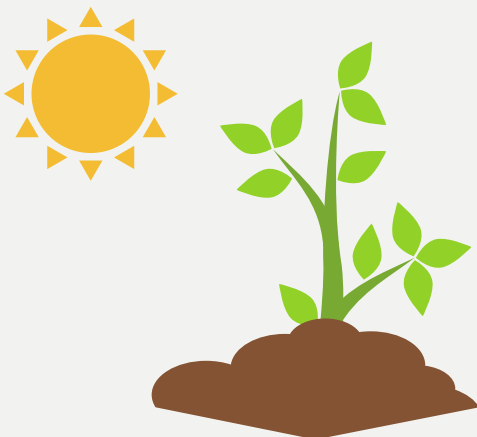
## Harvest

### Fruit

- Apricots
- Blackberries
- Blackcurrants
- Blueberries
- Gooseberries
- Cherries
- Rhubarb
- Peaches
- Nectarines
- Plums
- Raspberries
- Strawberries
- Tomatoes

### Vegetables

- Aubergines
- Beetroot
- Chillies
- Courgettes
- Cucumbers
- French beans
- Broad beans
- Garlic
- Carrots
- Celery
- Lettuces
- Onions
- Peas
- Potatoes
- Shallots
- Spinach
- Spring onions





# Gardener's Quiz

Good luck, the answers are below the questions to make sure to test and check your knowledge!

What is the purpose of deadheading flowers in gardening

- a. Remove faded flowers to promote blooming
- b. To help control pests and diseases
- c. To increase the plants height and fertility



Which of the following is a common method of propagating plants?

- a. Grafting
- b. Mowing
- c. Mulching
- d. Watering

What does the term "full sun" refer to in gardening?

- a. At least 4 hours of direct sunlight per day
- b. Partial shade with a few hours of sunlight
- c. No sunlight exposure is required
- d. Full shade with no direct sunlight



Which of the following is an example of a perennial plant?

- a. Tomato
- b. Sunflower
- c. Rose
- d. Lettuce



What is the primary function of compost in gardening?

- a. Improving drainage
- b. Adding nutrients to the soil
- c. Controlling pests and diseases
- d. Increasing soil acidity





*We can't wait to  
welcome you!*

